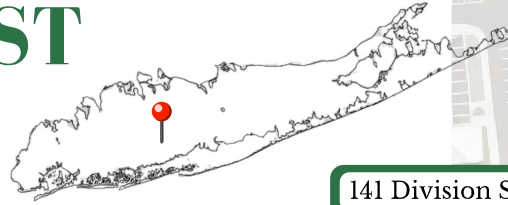


# ROOTS OF CONTRAST

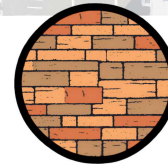
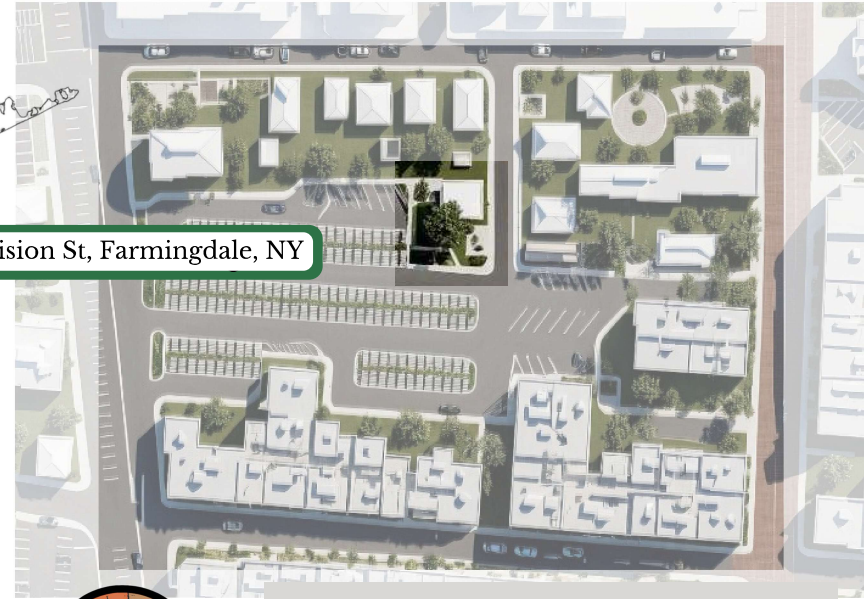
## Theatre and Bar

By Divjot Rai

My design for the black box theatre was inspired by the concept of yin and yang, seeking to create a harmonious balance between nature and structure. By recognizing the opportunity for thoughtful development within green space, I aimed to preserve the historic significance of Farmingdale, NY, while introducing a modern architectural form that respects and reflects its surroundings.



141 Division St, Farmingdale, NY



OLD

MEETS

NEW

Farmingdale, New York, traditionally known for its agricultural roots and historic brickwork architecture, serves as a key inspiration for our new black box theater design.

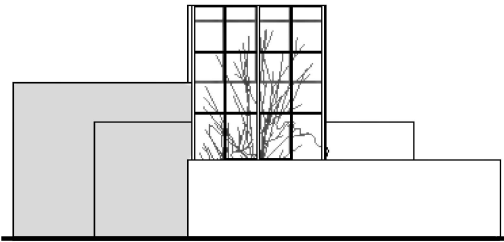
Blending these classic elements with contemporary materials, landscaping, and open green spaces, we aim to create a dynamic and welcoming environment. This fusion of old and new reflects the town's evolving identity, enhancing the theater's presence while honoring its local heritage.



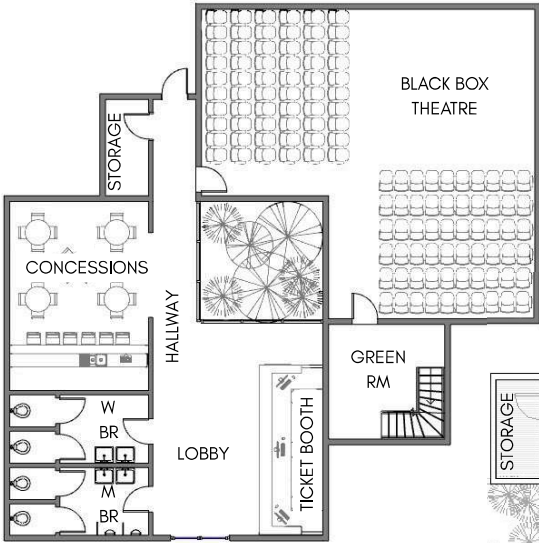
FRONT ELEVATION



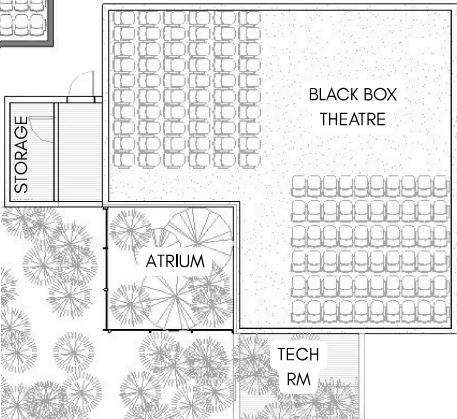
LEFT ELEVATION



1ST FLOOR PLAN

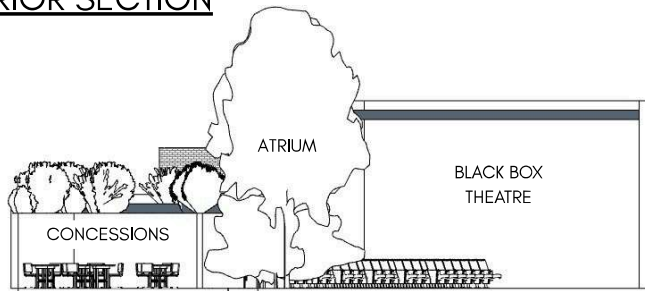


2ND FLOOR PLAN



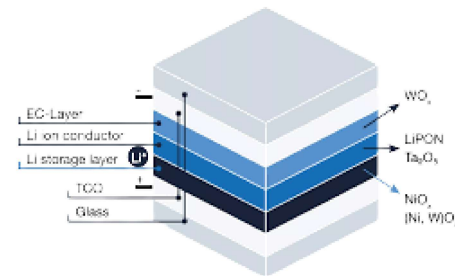
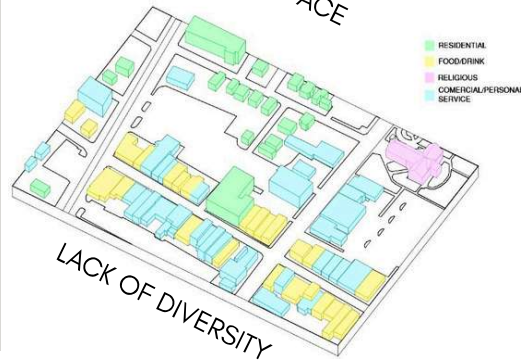


## INTERIOR SECTION



## TRANSFORMING THE SPACE

Main Street currently shows a lack of green space and limited diversity in building use. Our design addresses this by introducing electrochromic glass to transform the black box theater into a flexible, multipurpose space that adapts to different needs, while also integrating greenery to enhance community engagement and visual appeal.



ELECTROCHROMIC GLASS

